



**ticare**

TISSUE CARE PHILOSOPHY

CE  
0120

## DISPOSABLE FILTER CARTRIDGE (13109110) INSTRUCTIONS OF USE

### 1. DESCRIPTION:

By using the bone collector during the osteotomy with saws, handpieces, crest regularizations, etc., we will obtain a great amount of graft material to repair different types of tissues.

COMPONENT:



Disposable Filter Cartridge

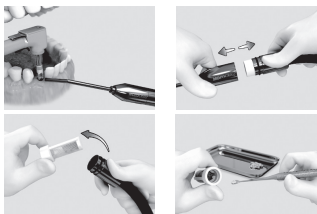
### 2. RECOMMENDATIONS FOR USE:

It is recommended the use of the bone collector only during the drilling process and only for this process. Use another aspirator tip to draw in blood and saliva and approach as much as possible the aspirator tip to

### 3. WARNINGS

Do not use disposable filter cartridge if the package is damage. Use disposable filter cartridge in aseptic conditions. The collected bone has to be used immediately.

### 4. SEQUENCE OF USE



### 5. CONTRAINDICATIONS:

Those products whose characteristics have been altered by use and are not safe for the indicated functions shall not be used.

### 6. WARNINGS AND CAUTIONS

For the safety and effectiveness of the instrumental this product is strongly suggested to be used by qualified personnel. THESE INSTRUCTIONS ARE NOT INTENDED TO BE A SUBSTITUTE FOR A PROPER TRAINING.

The Bone Collector is supplied NON-STERIL and must be used under aseptic conditions. The Disposable Filter Cartridge is supplied STERIL

### 7. CLEANING AND STERILIZATION:

The Disposable Filter Cartridge is sterile. A single use. The Disposable Filter Cartridge is supplied individually packed. Special measures are required to handle dental implants (dust avoidance and the use of gloves and titanium set of instruments).

### 8. PRODUCT COMPOSITION

All the components of the disposable Bone Collector are made of 303 stainless steel. The spare part of disposable filter cartridge are made of a variety of polymer

### 9. PACKAGING AND STORAGE

All the product information is shown on the label. Product packaging is performed individually. No special storage conditions are needed as the raw materials used are stable under standard pressure and temperature conditions. It is advisable to store between 18°C and 50°C and a moisture limit below 70%.

### 10. LABELLING SYMBOLS



Attention to usage rules



CE Certificate



Lot



Reference



Manufacturer



Do not use if damage



Gamma-Ray sterilized



One use only, no reusable

#### MANUFACTURER:

**MOZOGRAU<sup>®</sup>, S.A.**

C/ Santiago López González, 7  
47197 VALLADOLID (SPAIN)

Tel. +34 983211 312 fax: +34 983 304 021

e-mail: sales@ticareimplants.com

www.ticareimplants.com

Rev 2: 17 09 2019