



Committed to care

WE CARE

We care the product, we fuss over every single detail to offer gap**Zero** technology for a better result. Because we matter your trust, we focus on offering the best product and service.

YOU CARE

We know what matters to you and we care about it as you do: **Peri-implant health of your patients.** We are by your side to offer the counselling you need to achieve every product meets your needs.

TICARE

That is why we all are TICARE, because we care about every and each of our clients, every detail and above all because...

What matters to you, it also matters to us.
What you care, we care.



MOVING FOR CARE

We move for care, the innovation and a quality service.
We move for taking care of you. We care what matters to you.



GAPZERO TECHNOLOGY

THE TECHNOLOGY
WHICH REDUCES
PERI-IMPLANTITIS RISK



RBM-TEC

INTEGRATIVE
SURFACE



DELICACY

IN THE DRILLING
SEQUENCE

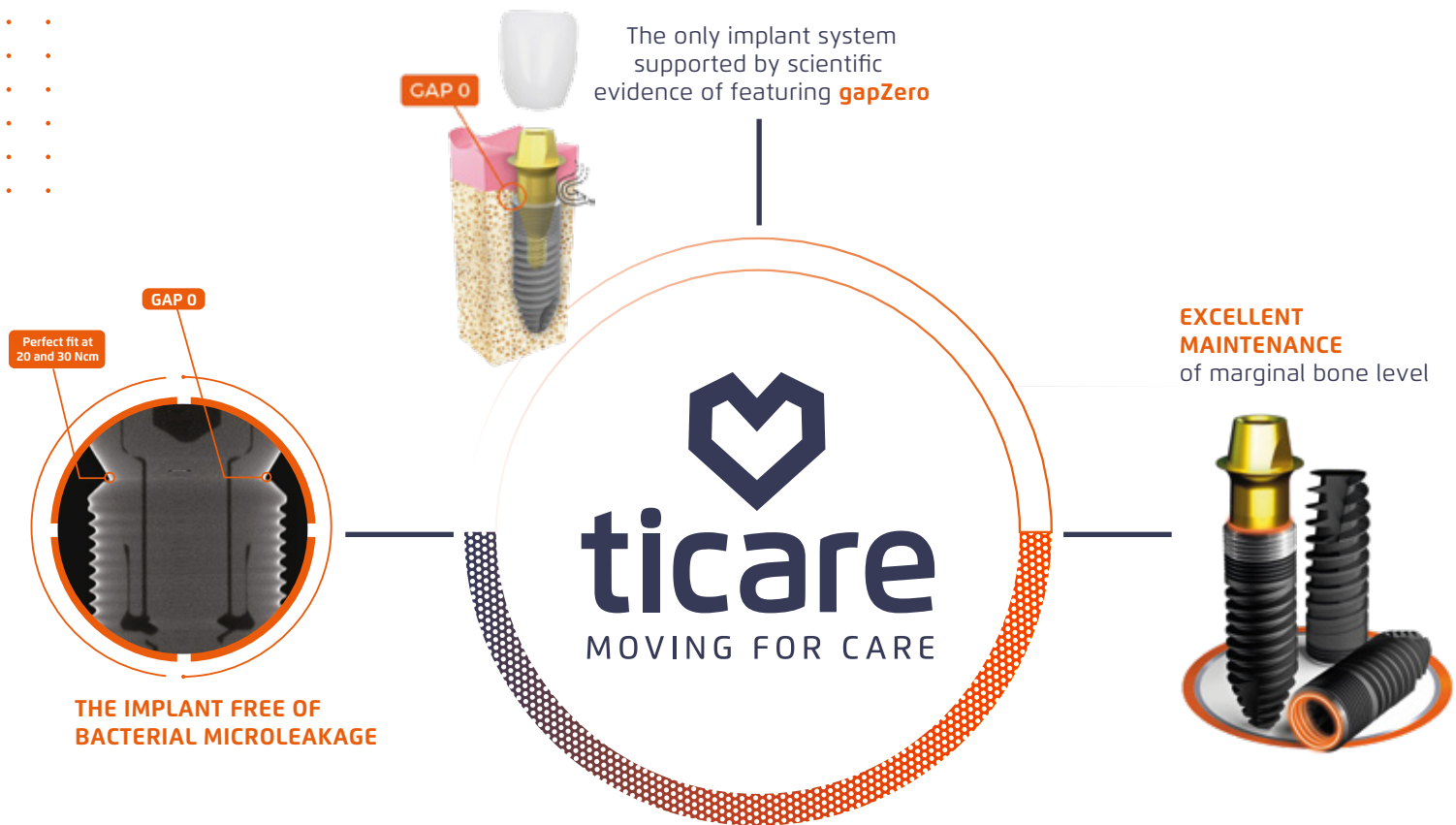


TRACEABILITY

WHICH ENSURES
THE QUALITY OF EVERY
IMPLANT AND ABUTMENT

1 THE TECHNOLOGY THAT REDUCES PERI-IMPLANTITIS RISK

GAP ZERO[®]
TECHNOLOGY



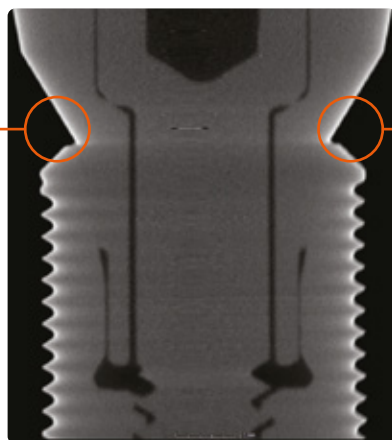
CLINICAL STUDIES AND TRIALS with Ticare implants
endorse gapZero and its clinical benefits

The **RESULT** is the implant **free of bacterial microleakage** that reduces the risk of peri-implantitis and offers an excellent maintenance of marginal bone level:

GAP 0

GAP ZERO
TECHNOLOGY

The paper published in 2018⁽²⁾ on **Ticare** inhex implants shows that **there is no bacterial microleakage at 20 and 30 N torques**.



Perfect fit at
20 and 30
Ncm

GAP 0

CT image courtesy of University of Minnesota.

In the comparative study⁽⁴⁾ published in 2021, **Ticare proved to be the only implant free of microleakage**.



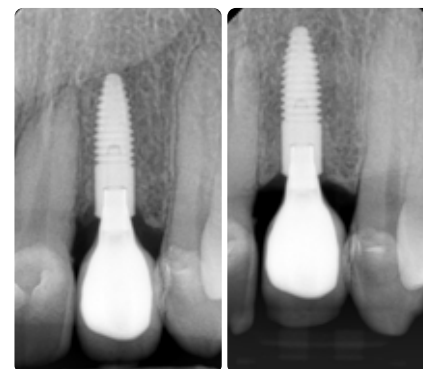
Verified gapZero only with Ticare abutments.

MAINTENANCE OF MARGINAL BONE

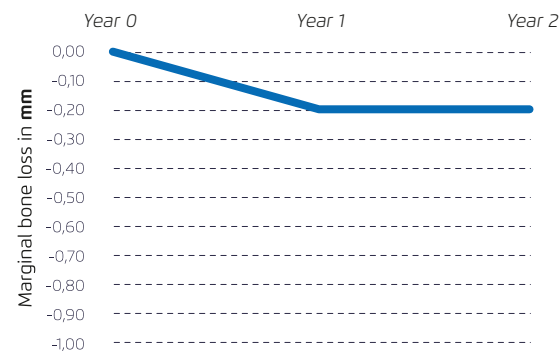
In the studies performed, marginal bone loss with **Ticare** inhex was **0.2mm at 7-year follow-up**⁽⁶⁻⁸⁾

LOADING TIME
YEAR 2015

FOLLOW-UP
YEAR 2024



Images courtesy of Dr. Pablo Domínguez



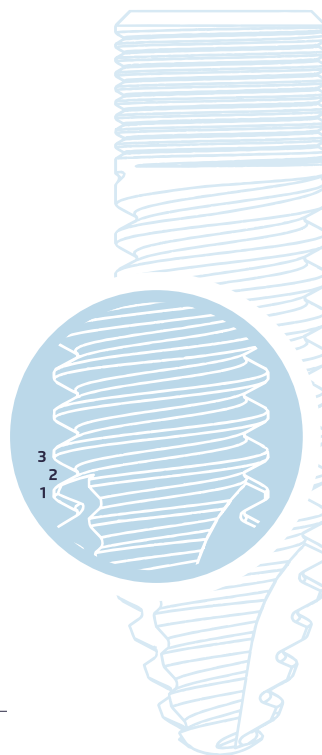
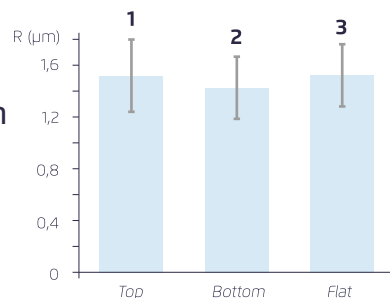
2

RBM-TC INTEGRATIVE SURFACE

MICROROUGH SURFACE
THAT IMPROVES
OSSEointegration

A Consistent microroughness by blasting the surface with biocompatible and resorbable particles that **increase bone-to-implant contact (BIC) percentage**.

B Surface 100% free of **contaminants** through an acid passivation to optimize osseointegration.



The **RESULT**: better osseointegration with high bone-to-implant contact (BIC)⁽²³⁻²⁶⁾ and **high survival rate** at 1- and 5-year follow-up.

SURVIVAL RATE

Research on **Ticare** implants deliver an average survival rate of 98% at 1- and 5-year follow-up and 94.25% in oncological patients⁽¹⁶⁻²²⁾.

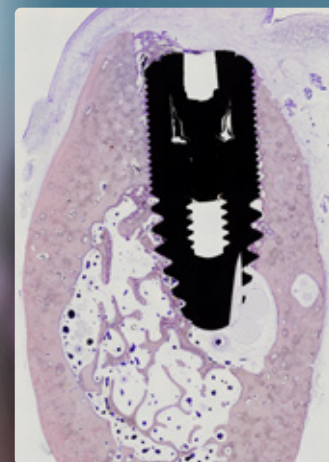
HIGH SURVIVAL
RATE

Image courtesy of
Dr. Alberto Monje

98%

AT 1- AND 3-YEAR
FOLLOW-UP

94.25%

IN ONCOLOGICAL
PATIENTS

DRILLING PROTOCOL DESIGNED FOR TISSUE CARE

WE OFFER TISSUE CARE

thanks to a specially designed drilling protocol⁽²³⁾ complemented by the use of:

RCD (Diamond-Like-Carbon Coating) helicoidal drills that **minimize friction with the bone⁽⁹⁾**.

A

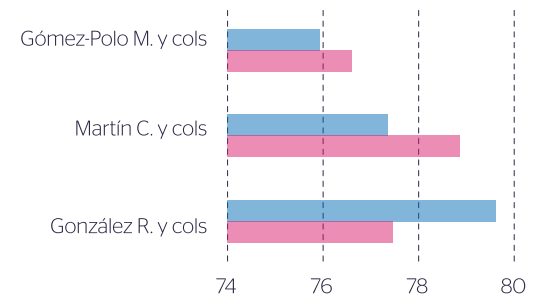
Profile drills to prepare **the cortical and avoid bone overcompression.**

B

The **RESULT** is a **high primary stability**, which leads to a high secondary stability offering high BIC⁽²³⁻²⁶⁾ and ISQ⁽²⁷⁻³⁰⁾ values from the 8th week, together with an **excellent maintenance of marginal bone level at long-term.**

AVERAGE ISQ VALUES

Placement ■
Follow-up ■



BIC% values at 8-week follow-up: 60.74%⁽²⁵⁾

4 FROM BEGINNING TO END TRACEABILITY

GENETIC GUARANTEES
TRACEABILITY OF EVERY
IMPLANT AND ABUTMENT

Manufacturing and verification processes of both the implant and the abutment that **allow full traceability of each part up to their installation** in the patient's jaw.

The **RESULT**: higher treatment predictability at the long term thanks to Genetic traceability system, a tool for the dental professional.



GENETIC

♥ticare

HIGHER TREATMENT
PREDICTABILITY



COMMUNICATE TICARE SYSTEM QUALITY TO THE PATIENT

DELIVER AN IMPLANT CARD

A Implant Card The implant's ID



ID Number
Unique Genetic code
given to every implant
and prosthesis

DOWNLOAD THE IMPLANT CERTIFICATE

B Customized Certificate showing manufacturing and verification information that can be obtained by the clinician or the patient from Ticare website in 15 different languages.

MOVING FOR CARE

CERTIFIES THAT

Thanks to our **ID Number**, we are able to provide the manufacturing traceability and product controls which the product has been subjected to.

ID NUMBER: 42340948	MANUFACTURING LOT: 14000522
REFERENCE: 23204215	MANUFACTURING DATE: 22/11/2023
DESCRIPTION: IMPLANTE INHEX STD. 4,25 X 15 MM	VERIFICATION DATE: 04/12/2023

OPERATIONS PERFORMED

<p>RESPONSIBLE OF THE MANUFACTURING 17/02/2024</p>	<p>RESPONSIBLE OF THE VERIFICATION 19/02/2024</p>
--	---

For your information we provide the diagram of your implant and/or prosthetic abutment, with the most significant parameters of the piece, guaranteed to be in compliance with the original design.

©/ Santiago López González, 7 - 47197 Valladolid - España | T. 983 309 602 | ticareimplants.com

The certificate can be downloaded from the website. Enter ticareimplants.com and click on Genetic

INFORM YOUR PATIENT ABOUT TICARE'S COMMITMENT WITH CARE

Your patient deserves the best smile and **Ticare** helps you to inform the patient about the **BENEFITS** we offer:

- A** An **implant** free of bacterial microleakage with a high success rate, better maintenance of bone level and lower risk of peri-implantitis.
- B** A **treatment** that takes care of the tissues thanks to a delicate drilling sequence.

Inform your patient about the **BENEFITS DELIVERED BY TICARE OVERALL SOLUTION** **Ticare** thanks to accurate manufacturing processes and piece by piece quality control.

Supply your patient with a **Ticare CERTIFICATE** to offer peace of mind.

YOUR PATIENT
DESERVES TO SMILE



MOVING FOR CARE

SCIENTIFIC EVIDENCE THAT SUPPORT TICARE BENEFITS



REFERENCES

A. Absence of gap in the implant-abutment connection

- (1) Larrucea Verdugo C, Jaramillo Núñez G, Acevedo Avila A, Larrucea San Martín C. Microleakage of the prosthetic abutment/implant interface with internal and external connection: in vitro study. Clin Oral Implants Res. 2014 Sep;25(9):1078-83.
- (2) Larrucea C, Conrado A, Olivares D, Padilla C, Barrera A, Lobos O. Bacterial microleakage at the abutment-implant interface, in vitro study. Clin Implant Dent Relat Res. 2018 Jun;20(3):360-367.
- (3) He Y, Fok A, Aparicio C, Teng W. Contact analysis of gap formation at dental implant-abutment interface under oblique loading: A numerical-experimental study. Clin Implant Dent Relat Res. 2019 Aug;21(4):741-752.
- (4) Carlos LV, C Carlos N, Sm Karina L, K Sunil B, E Carlos P, G Olga L. Comparative study of bacterial microfiltration in the implant-abutment interface, with straight and conical internal connections, in vitro. Clin Exp Dent Res. 2021 Dec;7(6):1014-1024.
- (5) Honório Tonin BS, He Y, Ye N, Chew HP, Fok A. Effects of tightening torque on screw stress and formation of implant-abutment microgaps: A finite element analysis. J Prosthet Dent. 2022 Jun;127(6):882-889.

B. Maintenance of marginal bone

Average bone loss at 5-year follow-up

- (6) R. Fernández, D. Peñarrocha-Oltra, M. Peñarrocha-Diogo, J. Buti, E. Khanari, M. Esposito. Natural or palatal positioning of immediate post-extractive implants in the aesthetic zone? 5-year results of a multicentre randomised controlled trial. Clinical Trials in Dentistry 2020;02(1):59-71
- (7) Serrano B, Sanz-Sánchez I, Serrano K, Montero E, Sanz M. One-year outcomes of dental implants with a hybrid surface macro-design placed in patients with history of periodontitis: A randomized clinical trial. J Clin Periodontol. 2022 Feb;49(2):90-100.
- (8) Maceiras L, Liñares A, Nóvoa L, Batalla P, Mareque S, Pérez J, Blanco J. Marginal changes at bone-level implants supporting dental prostheses with or without intermediate standardised abutments after 36 months: Randomised controlled clinical trial. Clin Oral Implants Res.2024; 00:1-9.
- (9) Bernabeu-Mira JC, Pellicer-Chover H, Peñarrocha-Diogo M, Peñarrocha-Oltra D. In Vitro Study on Bone Healing during Drilling of the Implant Site: Material, Design and Wear of the Surgical Drill. Materials (Basel). 2020 Apr 19;13(8):1921

C. Survival rate

C.1. Implant survival at 1- and 5-year follow-up

- (10) Peñarrocha-Diogo MA, Flichy-Fernández AJ, Iñonso-González R, Peñarrocha-Oltra D, Balaguer-Martínez J, Peñarrocha-Diogo M. Influence of implant neck design and implant-abutment connection type on peri-implant health. Radiological study. Clin Oral Implants Res. 2013 Nov;24(11):1192-200.

(11) Pellicer-Chover H, Peñarrocha-Diogo M, Peñarrocha-Oltra D, Gomar-Vercher S, Agustín-Panadero R, Peñarrocha-Diogo M. Impact of crestal and subcrestal implant placement in peri-implant bone: A prospective comparative study. Med Oral Patol Oral Cir Bucal. 2016 Jan 1;21(1):e103-10.

(12) Peñarrocha-Diogo M, Balaguer-Martí JC, Peñarrocha-Oltra D, Balaguer-Martínez JF, Peñarrocha-Diogo M, Agustín-Panadero R. A combined digital and stereophotogrammetric technique for rehabilitation with immediate loading of complete-arch, implant-supported prostheses: A randomized controlled pilot clinical trial. J Prosthet Dent. 2017 Nov;118(5):596-603.

(13) Pellicer-Chover H, Peñarrocha-Oltra D, Aloy-Prosper A, Sanchis-Gonzalez JC, Peñarrocha-Diogo MA, Peñarrocha-Diogo M. Comparison of peri-implant bone loss between conventional drilling with irrigation versus low-speed drilling without irrigation. Med Oral Patol Oral Cir Bucal. 2017 Nov 1;22(6):e730-e736.

(14) Pellicer-Chover H, Peñarrocha-Diogo M, Aloy-Prosper A, Canullo L, Peñarrocha-Diogo M, Peñarrocha-Oltra D. Does Apico-Coronal Implant Position Influence Peri-Implant Marginal Bone Loss? A 36-Month Follow-Up Randomized Clinical Trial. J Oral Maxillofac Surg. 2019 Mar;77(3):515-527.

(15) M. Esposito, L. Sbricoli, J. Buti, U. Uccoli, M. Tallarico. Endodontic retreatment vs dental implants of teeth with an uncertain endodontic prognosis: 5-year results from a randomised controlled trial. Clinical Trials in Dentistry 2020;02(3):27-43.

C.2. Implant survival up to 7-year follow-up in oncologic patients

- (16) Cuesta-Gil M, Ochandiano Caicoya S, Riba-García F, Duarte Ruiz B, Navarro Cuéllar C, Navarro Vila C. Oral rehabilitation with osseointegrated implants in oncologic patients. J Oral Maxillofac Surg. 2009 Nov;67(11):2485-96.
- (17) Mancha de la Plata M, Gías LN, Díez PM, Muñoz-Guerra M, González-García R, Lee GY, Castrejón-Castrejón S, Rodríguez-Campo FJ. Osseointegrated implant rehabilitation of irradiated oral cancer patients. J Oral Maxillofac Surg. 2012 May;70(5):1052-63.
- (18) Navarro Cuellar C, Caicoya SJ, Acero Sanz JJ, Navarro Cuellar I, Muela CM, Navarro Vila C. Mandibular reconstruction with iliac crest free flap, nasolabial flap, and osseointegrated implants. J Oral Maxillofac Surg. 2014 Jun;72(6):1226.e1-15.
- (19) Navarro Cuéllar C, Ochandiano Caicoya S, Navarro Cuéllar I, Valladares Pérez S, Fariña Sirandoni R, Antúñez-Conde R, Díez Montiel A, Sánchez Pérez A, López López AM, Navarro Vila C, Salmerón Escobar JI. Vertical Ridge Augmentation of Fibula Flap in Mandibular Reconstruction: A Comparison between Vertical Distraction, Double-Barrel Flap and Iliac Crest Graft. J Clin Med. 2020 Dec 30;10(1):101.
- (20) Antúñez-Conde R, Salmerón JI, Díez-Montiel A, Agea M, Gascón D, Sada Á, Navarro Cuéllar I, Tousidonis M, Ochandiano S, Arenas G, Navarro Cuéllar C. Mandibular Reconstruction With Fibula Flap and Dental Implants Through Virtual Surgical Planning and Three Different Techniques: Double-Barrel Flap, Implant Dynamic Navigation and CAD/CAM Mesh With Iliac Crest Graft. Front Oncol. 2021 Oct 5;11:719712.
- (21) Navarro Cuéllar C, Tousidonis Rial M, Antúñez-Conde R, Agea Martínez M, Navarro Cuéllar I, Salmerón Escobar JI, Navarro Vila C. Functional Outcomes with Facial Artery Musculo-Mucosal (FAMM) Flap and Dental Implants for

Reconstruction of Floor of the Mouth and Tongue Defects in Oncologic Patients. J Clin Med. 2021 Aug 17;10(16):3625.

(22) Navarro Cuéllar C, Tousidonis Rial M, Antúñez-Conde R, Ochandiano Caicoya S, Navarro Cuéllar I, Arenas de Frutos G, Sada Urmeneta Á, García-Hidalgo Alonso MI, Navarro Vila C, Salmerón Escobar JI. Virtual Surgical Planning, Stereolithographic Models and CAD/CAM Titanium Mesh for Three-Dimensional Reconstruction of Fibula Flap with Iliac Crest Graft and Dental Implants. J Clin Med. 2021 Apr 29;10(9):1922.

D. Bone-to-Implant Contact (BIC) ratio

- (23) Blanco J, Alvarez E, Muñoz F, Liñares A, Cantalapiedra A. Influence on early osseointegration of dental implants installed with two different drilling protocols: a histomorphometric study in rabbit. Clin Oral Implants Res. 2011 Jan;22(1):92-9.
- (24) Soto-Peñaloza D, Caneva M, Viña-Almunia J, Martín-de-Llano JJ, García-Mira B, Peñarrocha-Oltra D, Botticelli D, Peñarrocha-Diogo M. Effect on osseointegration of two implant macro-designs: A histomorphometric analysis of bicortically installed implants in different topographic sites of rabbit's tibiae. Med Oral Patol Oral Cir Bucal. 2019 Jul 1;24(4):e502-e510.
- (25) Monje A, Chappuis V, Monje F, Muñoz F, Wang HL, Urban IA, Buser D. The Critical Peri-implant Buccal Bone Wall Thickness Revisited: An Experimental Study in the Beagle Dog. Int J Oral Maxillofac Implants. 2019 November/December;34(6):1328-1336.
- (26) Sanchez-Perez A, Cachazo-Jiménez C, Sánchez-Matás C, Martín-de-Llano JJ, Davis S, Carda-Batalla C. Effects of Ultraviolet Photoactivation on Osseointegration of Commercial Pure Titanium Dental Implant After 8 Weeks in a Rabbit Model. J Oral Implantol. 2020 Apr 1;46(2):101-107.

E. Implant stability Values (ISQ)

- (27) Gómez-Polo M, Ortega R, Gómez-Polo C, Martín C, Celemin A, Del Río J. Does Length, Diameter, or Bone Quality Affect Primary and Secondary Stability in Self-Tapping Dental Implants? J Oral Maxillofac Surg. 2016 Jul;74(7):1344-53.
- (28) Martín C, Gómez-Polo C, Gómez-Polo M, Celemin A, del Río Highsmith J. Estudio clínico sobre el torque de inserción y análisis de frecuencia de resonancia para evaluar la estabilidad primaria y secundaria en implantes dentales Mozo Grau Inhex. Rev Int Prot estomatol 2015;17(2):109-118
- (29) González-García R, Monje F, Moreno-García C. Predictability of the resonance frequency analysis in the survival of dental implants placed in the anterior non-atrophied edentulous mandible. Med Oral Patol Oral Cir Bucal. 2011 Aug 1;16(5):e664-9.
- (30) Sanchez-Perez A, Nicolas-Silvente AI, Sanchez-Matas C, Molina-García S, Navarro-Cuellar C, Romanos GE. Primary stability and PES/WES evaluation for immediate implants in the aesthetic zone: a pilot clinical double-blind randomized study. Sci Rep. 2021 Oct 8;11(1):20024.



ticareimplants.com

@ticareimplants



Phone: +34 983 211 312

Email: sales@ticareimplants.com

Sponsor of the following Scientific Societies:

